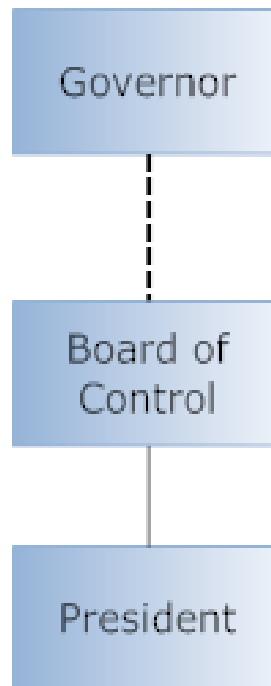


# University Senate

April 21, 2010

# Institutional Organization



# Board of Control

State of Michigan Enabling Legislation:

- A Board of eight (8) appointed by Governor
- President serves as ex officio member
- Power vested in Board to *govern* institution

# President of the University

(as found in the Bylaws of the Board of Control)

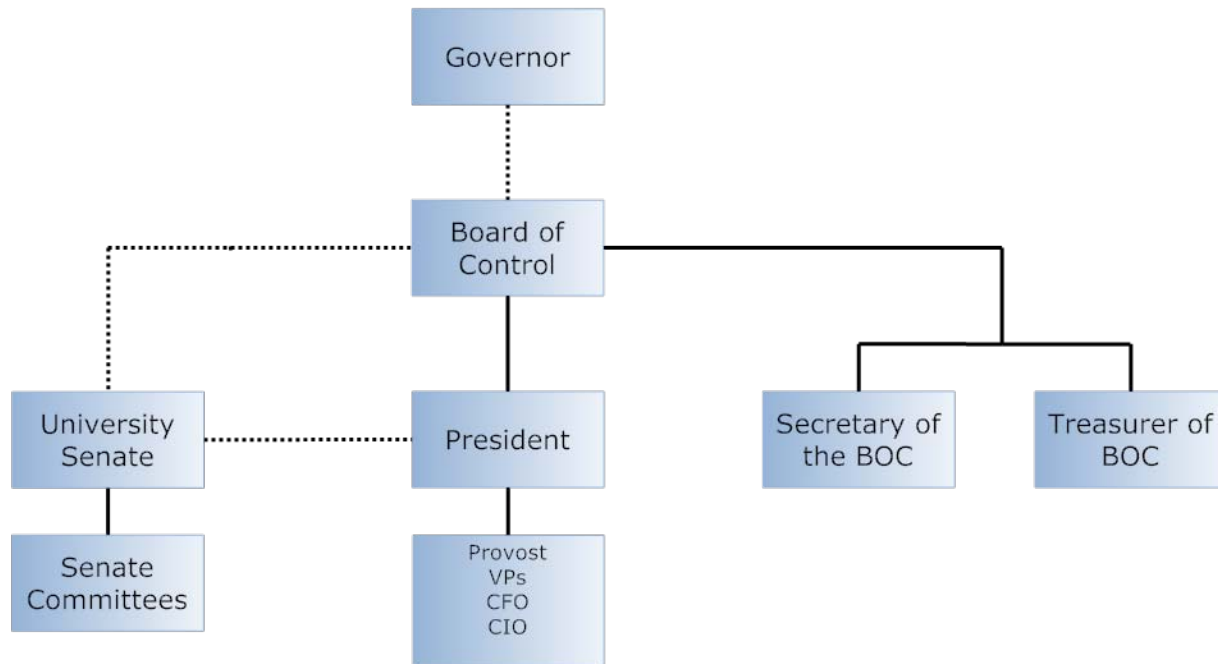
- Chief Executive Officer of University
- Ability to define duties of subordinate officers

# University Senate

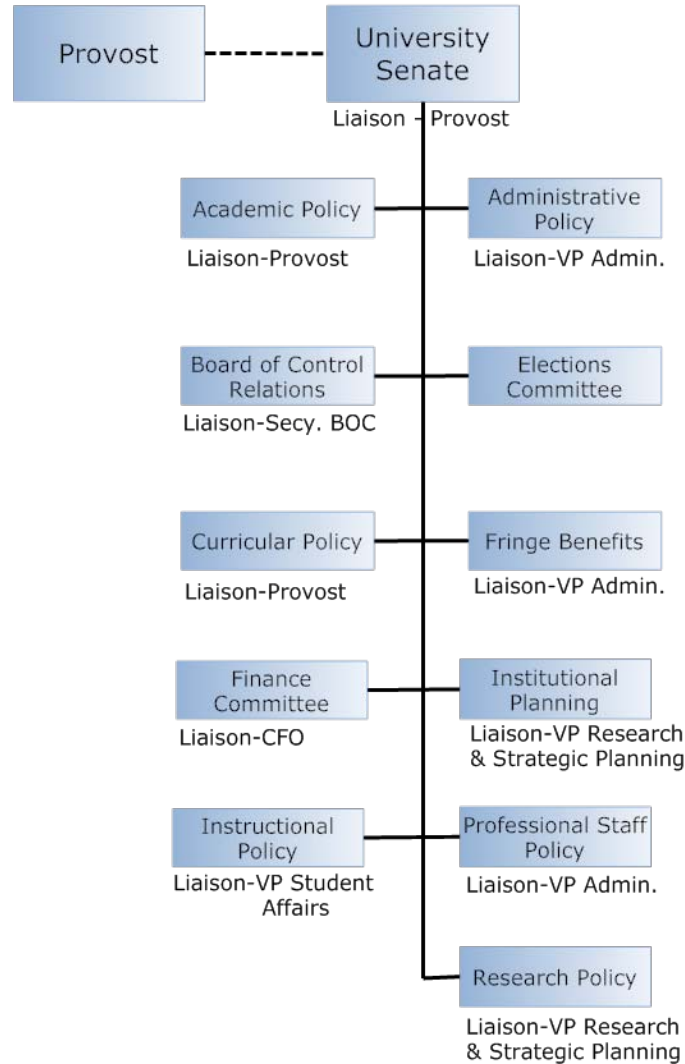
- Constitution
- Approved by Board of Control

# Organizational and Operational Relationships

# Organizational Relationships



# Operational Relationships





# Senate Governance

Senate Responsibility and Authority

❖ “A” Lists of Senate Constitution

Senate Review, Recommend and Participate

❖ “B” Lists of Senate Constitution

# Senate Proposals

## 2005-2010

YEAR	PASSED BY SENATE	APPROVED BY PRESIDENT	REJECTED BY PRESIDENT
2005-06	26	21 <sup>1</sup>	2
2006-07	21	19 <sup>2</sup>	
2007-08	20	17 <sup>3</sup>	1
2008-09	19	15 <sup>4</sup>	2
2009-10	22	21 <sup>5</sup>	
TOTAL	108	93	5

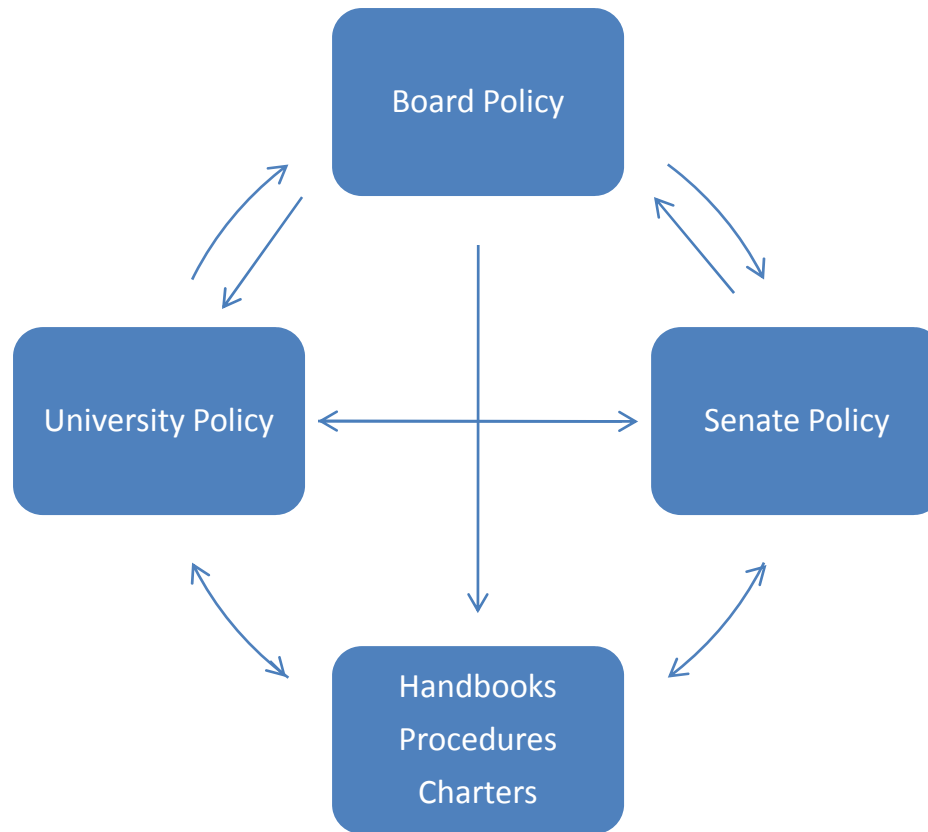
<sup>1</sup>no approval required for 16-06 and Senate Resolution on Career Day and Senate Resolution on Chalking Incident

<sup>2</sup>no approval required for 1-07 and 20-07

<sup>3</sup>no approval required for 3-08 and Charter Index

<sup>4</sup>no approval required for 2-09 and Resolution on ADVANCE grant

<sup>5</sup>no approval required for 16-10 "Current Policies and Procedures"



# Board of Control Policy Review

# University Policy Review

**Review:**

**Handbooks**

**Procedures**

# Governance Scenarios

Senate Engagement	High	Senate Displaces Administration	Senate & Administration Collaborate
	Low	Senate & Administration Disengage	Administration Displaces Senate
		Low	High
		Administrative Engagement	

Note: Modeled after Chait, etal. 2005