

Michigan Tech

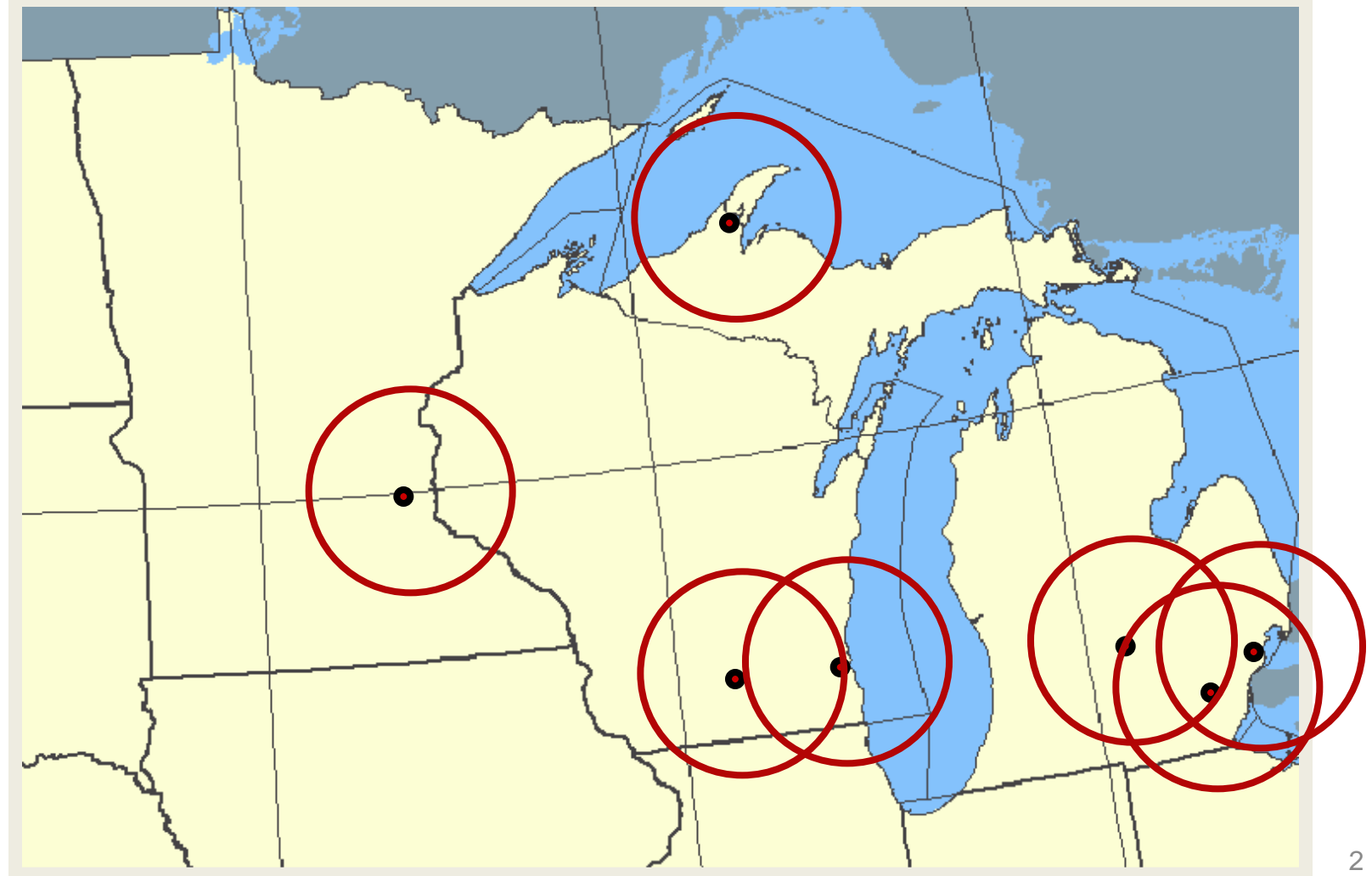
Create the Future

**Financial Presentation
University Senate
December 2012**



Accredited Engineering Programs 1936 – Industrial Era

7

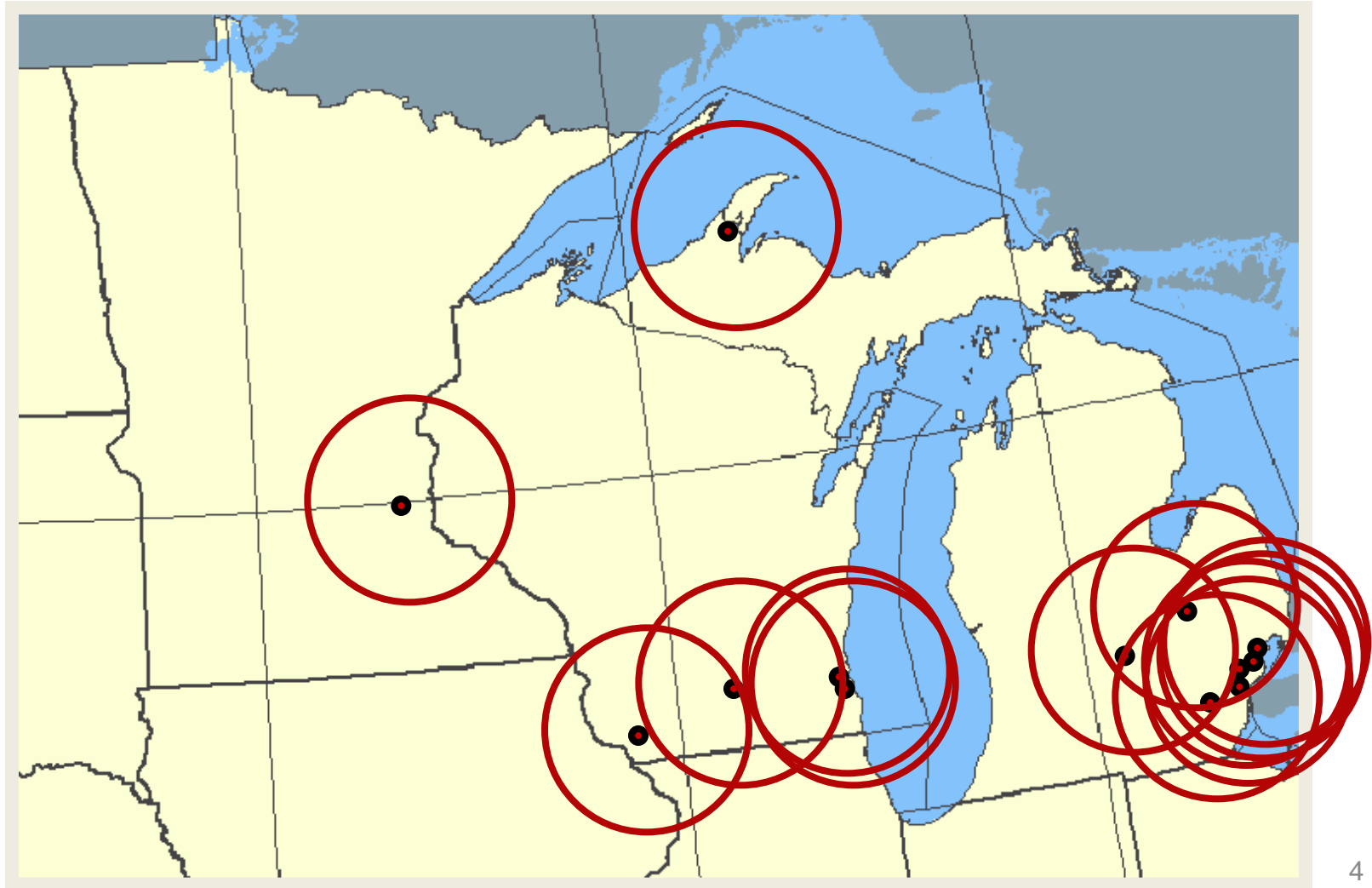
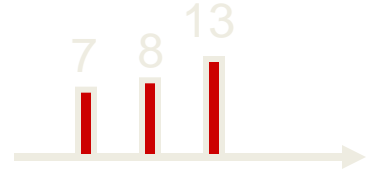


Accredited Engineering Programs 1956 – Post War Era

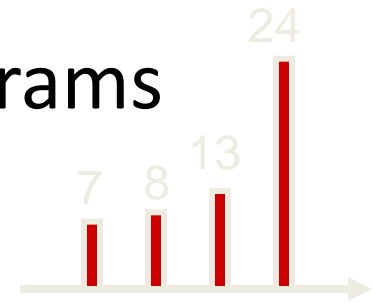
7 8



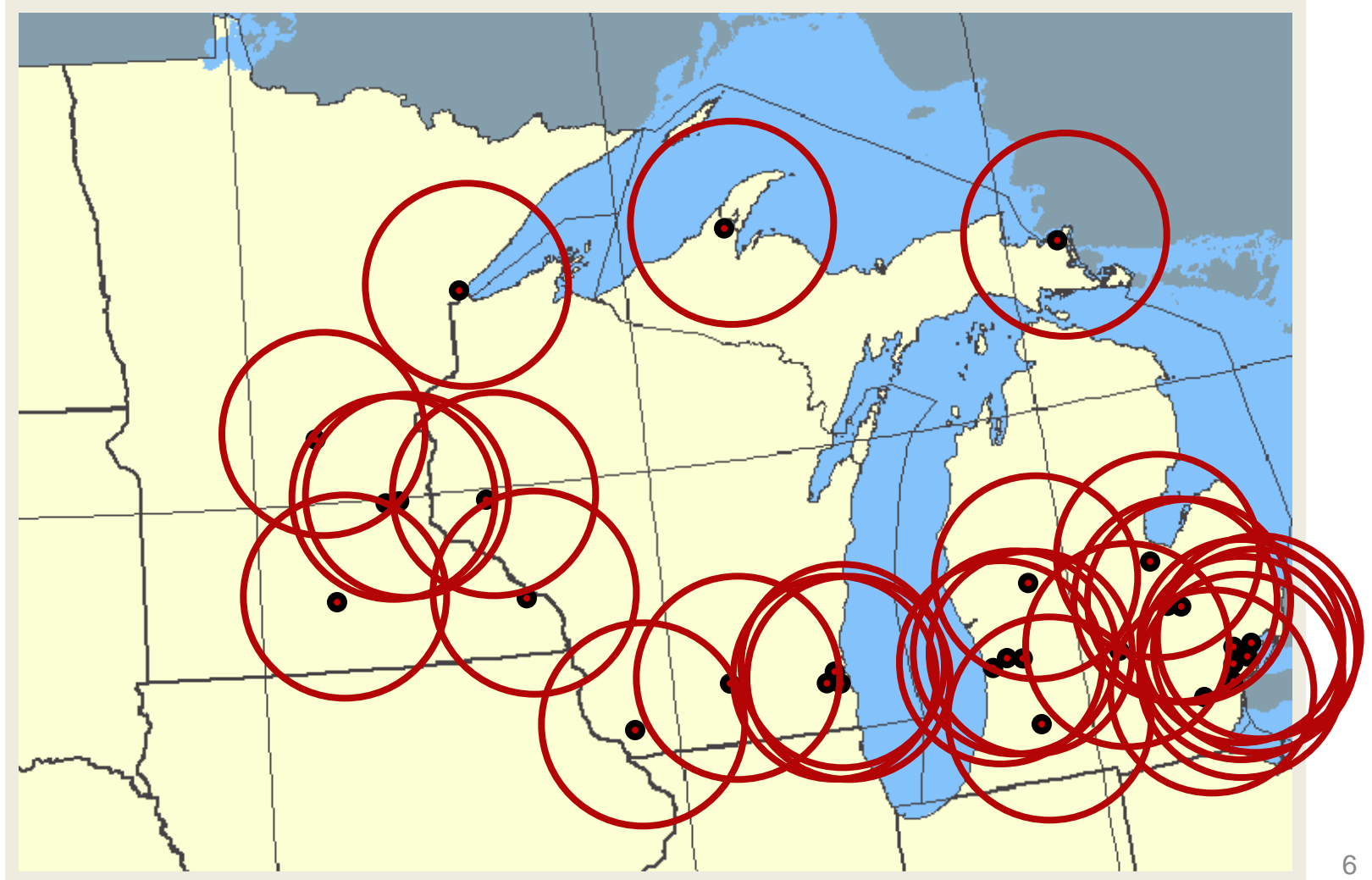
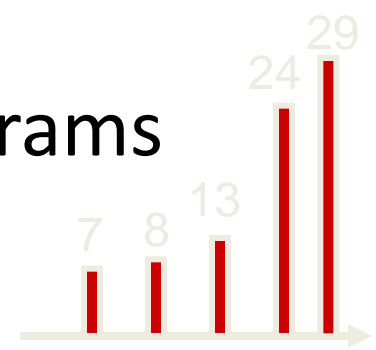
Accredited Engineering Programs 1976 – Post Sputnik Era



Accredited Engineering Programs 1996 – Information Era

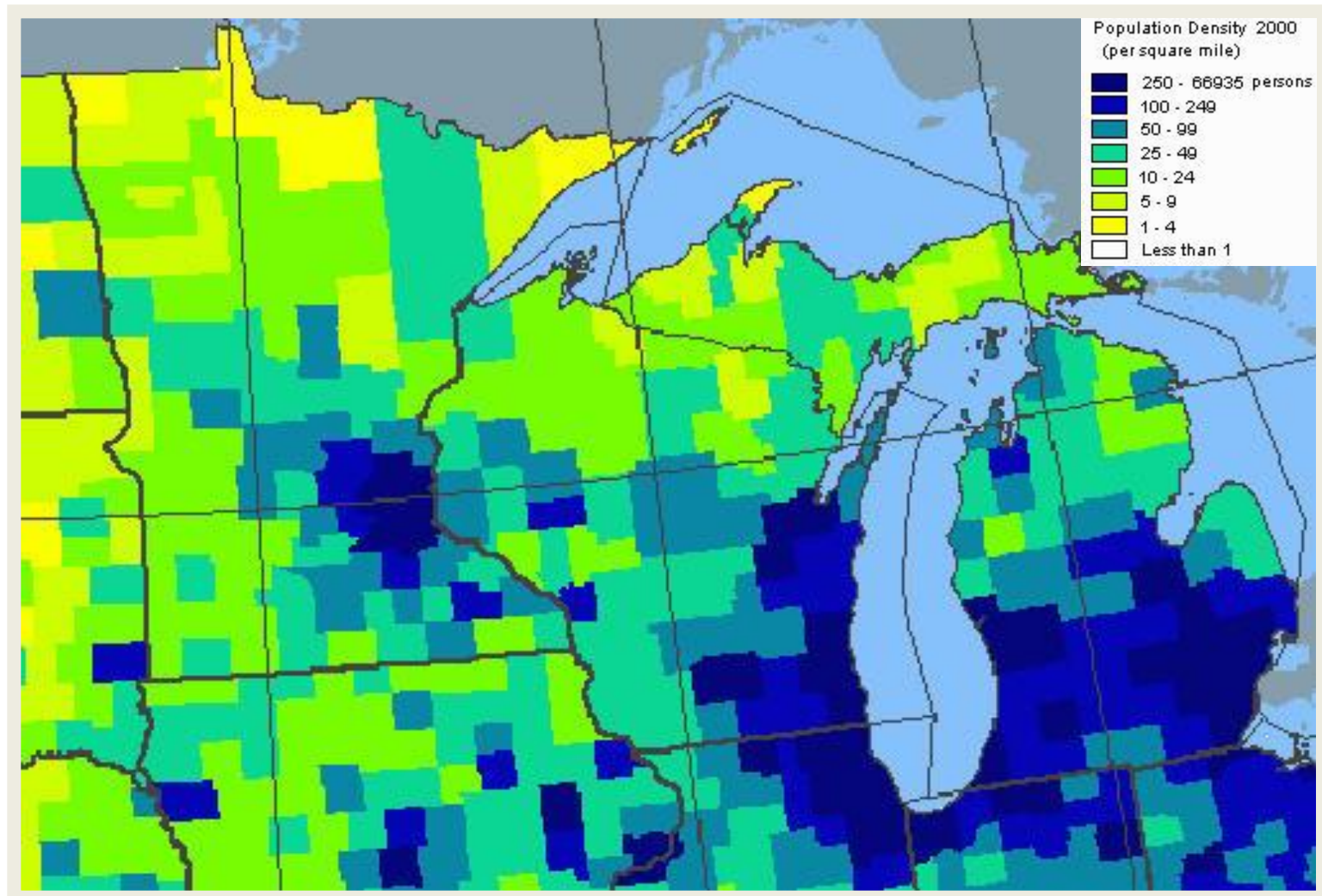


Accredited Engineering Programs 2006 – Today



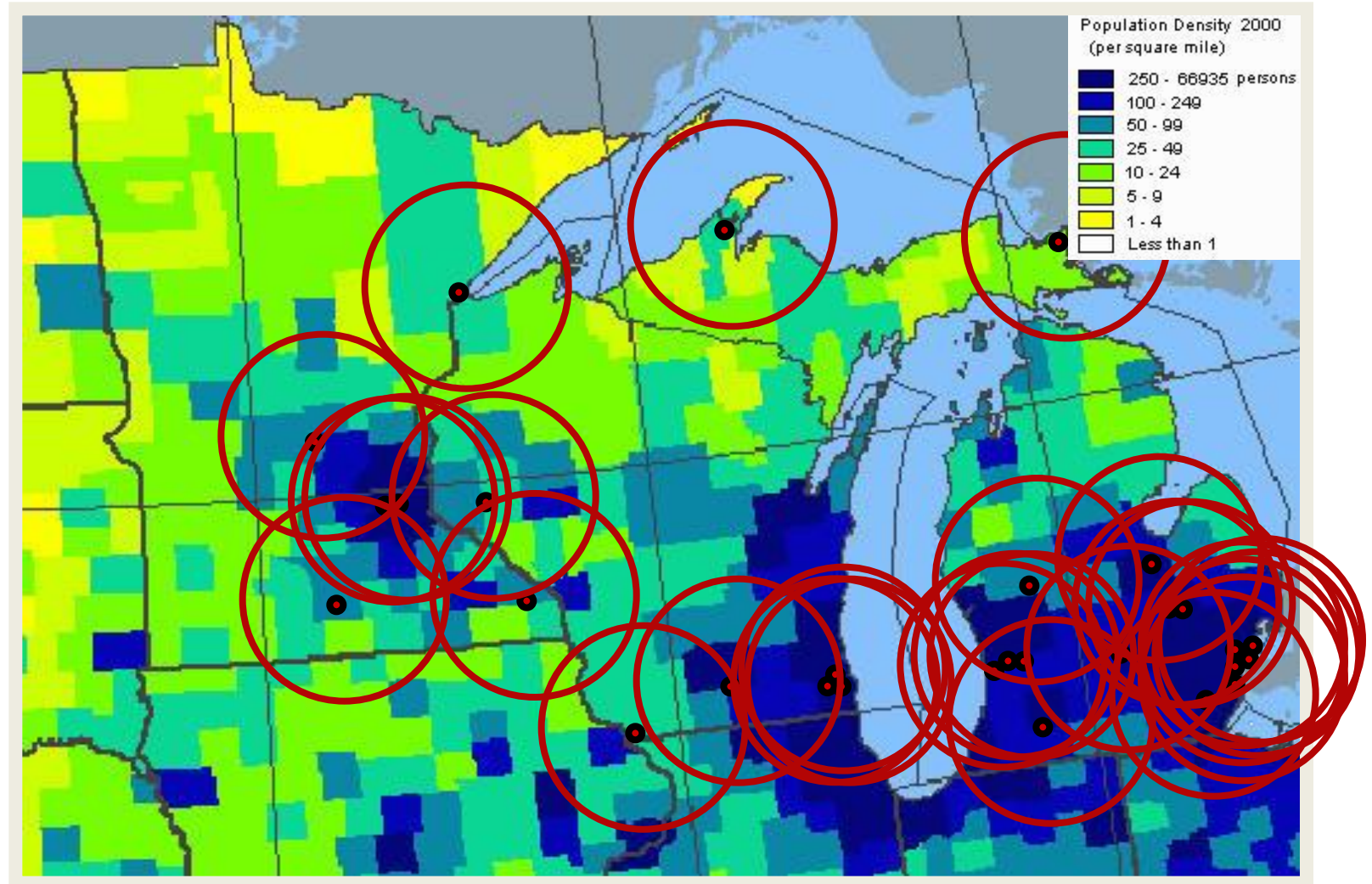
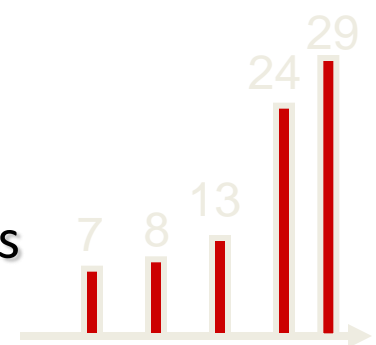
The Market

-Population Density



The Market is Covered

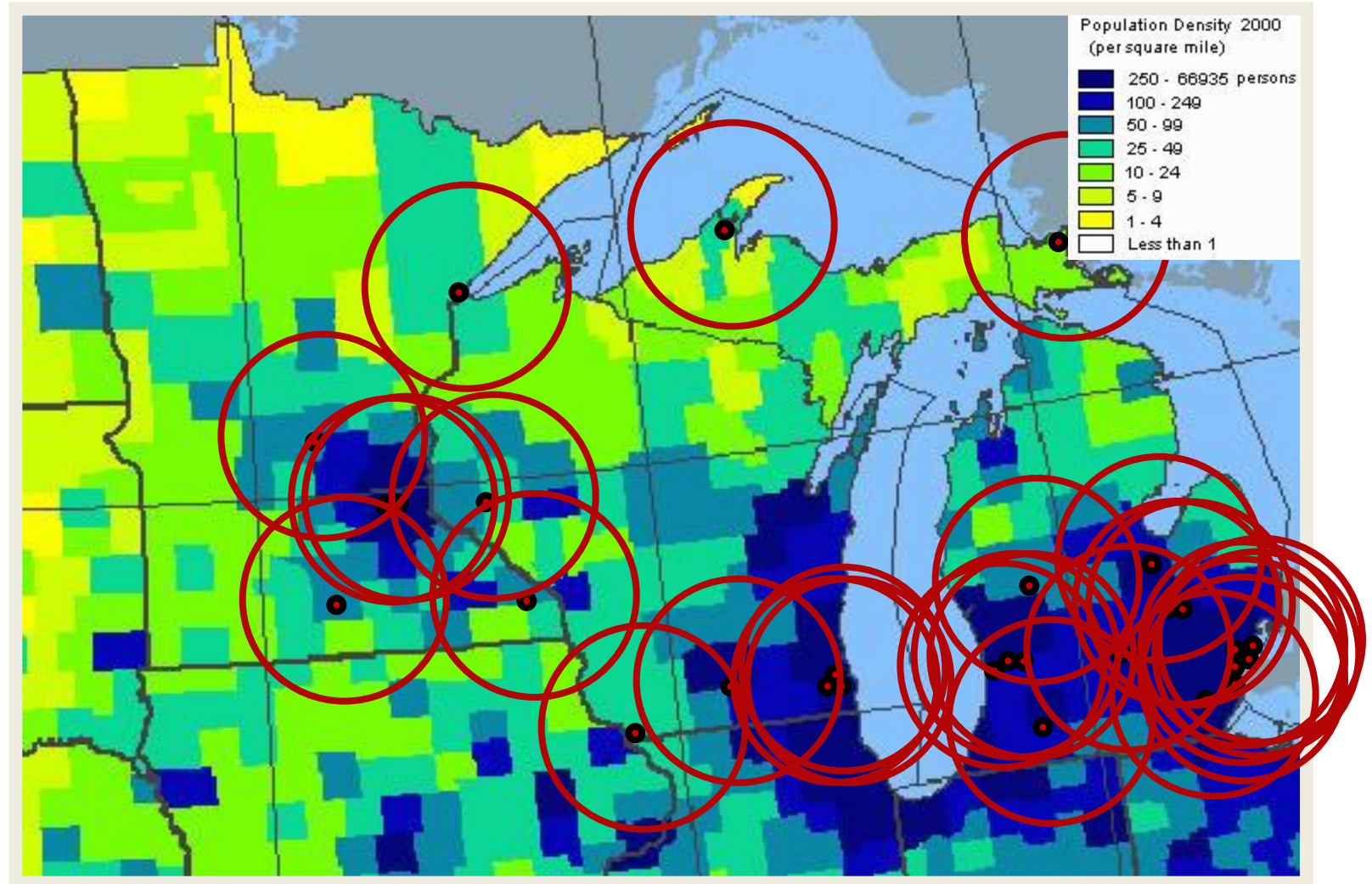
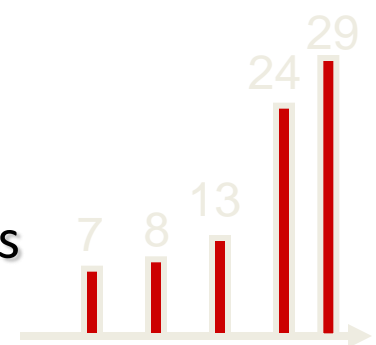
-Accredited Engineering Programs



WHY?

The Market is Covered

-Accredited Engineering Programs



Top Midwest Public Universities

Regional

Truman State University (MO)
University of Northern Iowa
Univ. of Wisconsin–La Crosse
Washburn University (KS)
Univ. of Wisconsin–Eau Claire
University of Michigan–Dearborn
Univ. of Wisconsin–Stevens Point
Eastern Illinois University
University of Minnesota–Duluth
Grand Valley State University (MI)
Univ. of Wisconsin–Platteville
Univ. of Wisconsin–Whitewater
Missouri State Univ.
Univ. of Wisconsin–Green Bay
Univ. of Wisconsin–River Falls
Southern Illinois U.–Edwardsville
University of Wisconsin–Stout
Western Illinois University
Northwest Missouri State Univ.
Southeast Missouri State Univ.
Winona State University (MN)
Univ. of Nebraska–Kearney

National

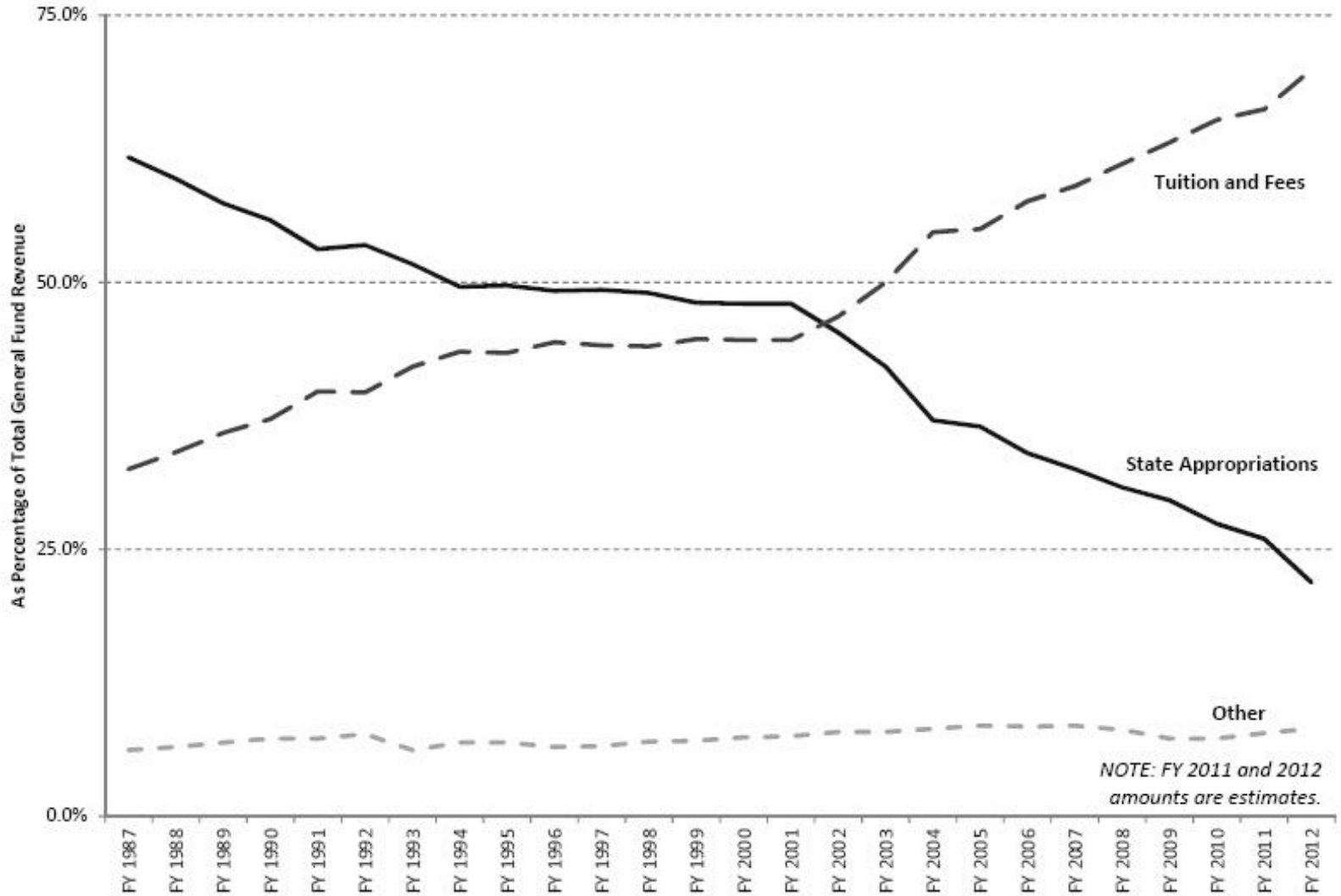
3 University of Michigan–Ann Arbor
8 Univ. of Wisconsin–Madison
11 U. of Illinois–Urbana-Champaign
14 Pennsylvania State U.–University Park
19 University of Pittsburgh
21 Ohio State University–Columbus
21 Purdue Univ.–West Lafayette (IN)
21 University of Iowa
26 Miami University–Oxford (OH)
30 Indiana University–Bloomington
30 Michigan State University
30 Univ. of Minnesota–Twin Cities
38 Iowa State University
45 University of Kansas
45 Univ. of Nebraska–Lincoln
52 Ohio University
52 University of Missouri–Rolla

Which list do we want to be on?

2006 - More Need For Graduate Degrees

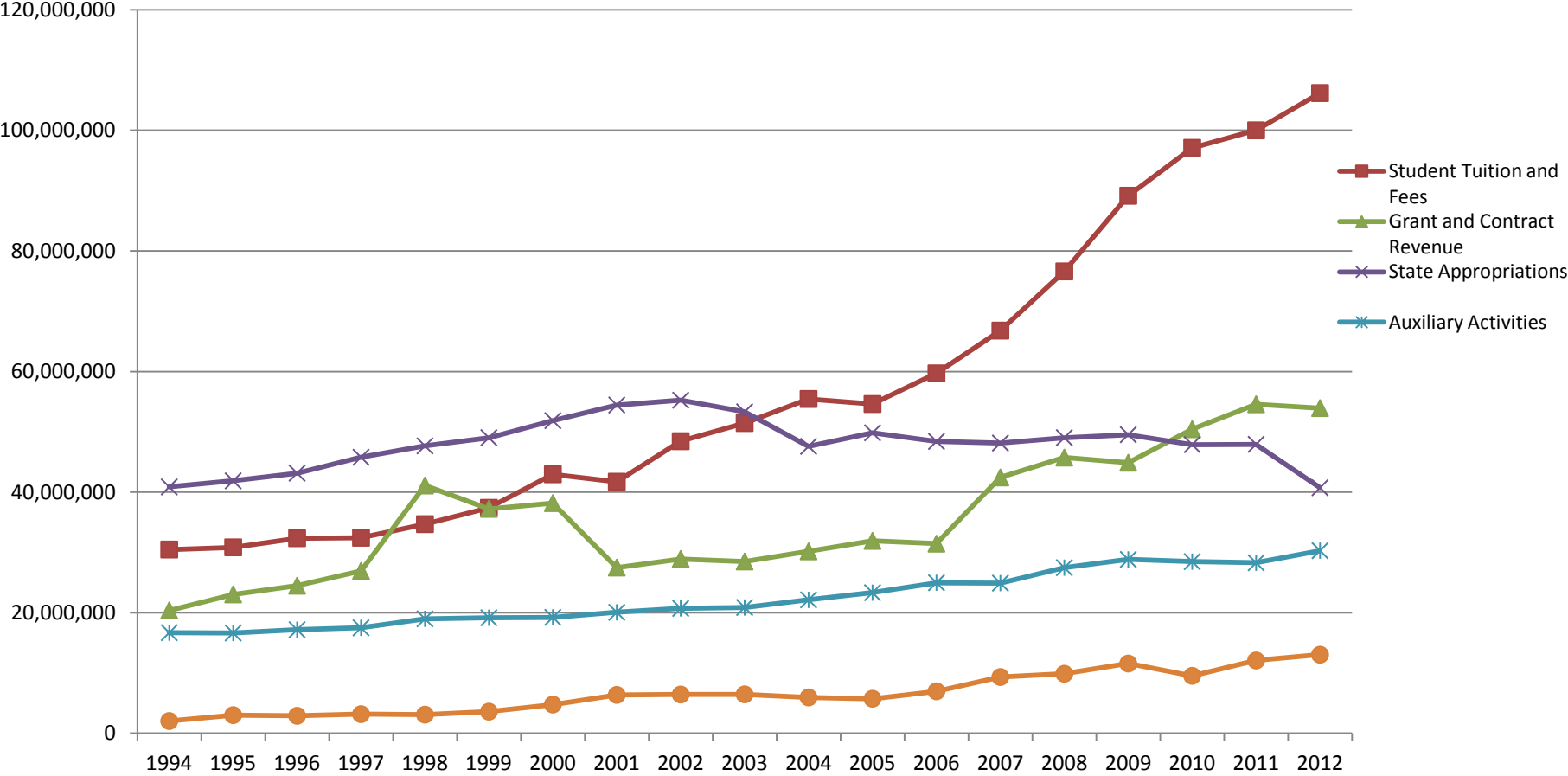
- Technology has gotten more complex
 - Look at your car engine, your computer
- Need for more graduate degrees
 - 33% in USA
 - 18% at Michigan Tech

ATTACHMENT 5 University General Fund Revenue History



Revenue Trends FY94 - FY12

Current Fund



Strategic Plan

- Approved by Board of Control on April 27, 2012
 - ✓ Major Goals Remain Same
 - People
 - Distinctive Education
 - Research/Scholarship/Creativity/Entrepreneurship
- <http://www.mtu.edu/stratplan/>

Faculty Drives Reputation

-Reputation attracts the best students

- Faculty drives reputation
 - Conferences / papers / citations
 - Research programs
 - Graduate programs

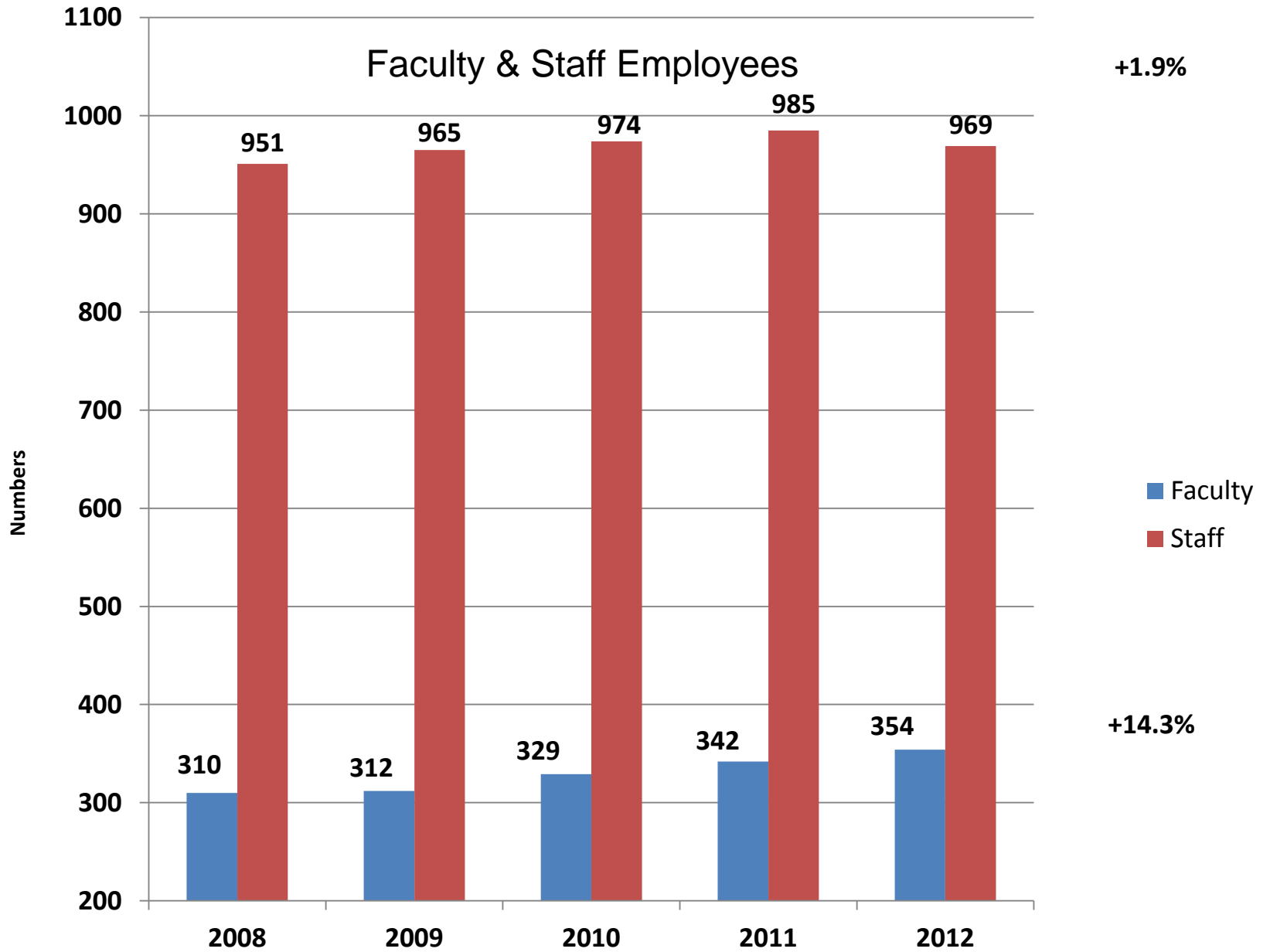
Current Fund Balances 2006-2012

FISCAL YEAR	GENERAL FUND	DESIGNATED FUND	AUXILIARY FUND	R&I FUND	EXPENDABLE RESTRICTED FUND	TOTAL CURRENT FUNDS
6/30/2006	(9,418,709)	11,711,149	9,361,936	1,100,429	1,801,945	14,556,750
6/30/2007	(9,144,578)	12,704,216	8,122,457	1,366,980	3,030,770	16,079,845
6/30/2008	(9,639,258)	14,459,317	9,210,497	(1,548,501)	2,933,114	15,415,169
6/30/2009	(11,119,692)	17,622,935	9,408,680	(3,098,785)	2,821,643	15,634,782
6/30/2010	(11,260,088)	17,669,080	8,109,037	(1,897,826)	2,692,577	15,312,779
6/30/2011	(10,999,503)	17,482,191	6,850,582	(62,315)	2,808,383	16,079,338
6/30/2012	(12,602,185)	15,816,151	9,235,156	(3,551,797)	3,590,414	12,487,739

Michigan Tech. University

General Fund Expenditures

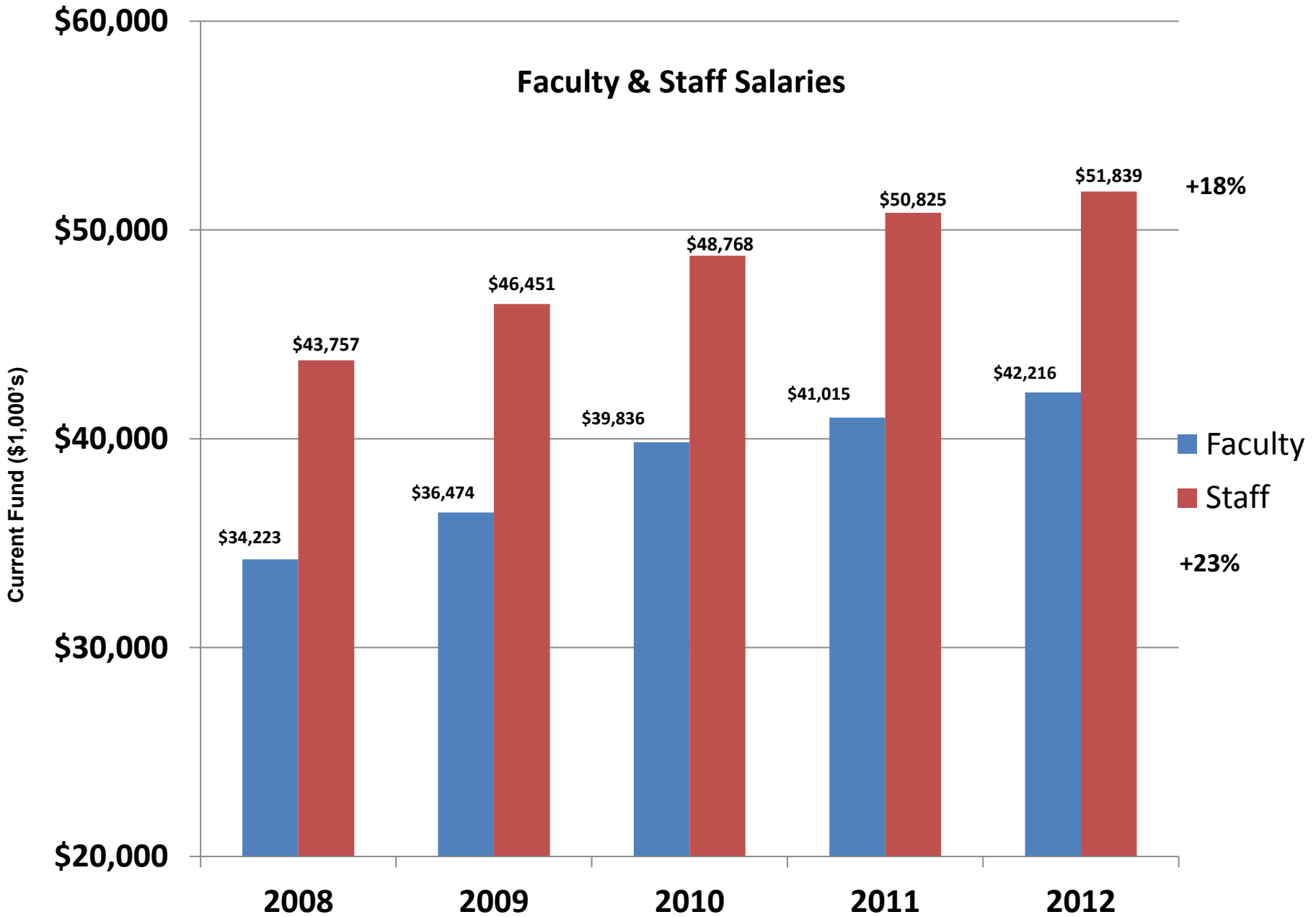
	2007-08	2008-09	2009-10	2010-11	2011-12	
Instruction	49,335,708	53,425,501	55,077,313	54,940,005	55,386,860	
Research	10,363,039	11,555,359	14,120,400	15,072,423	16,200,342	
Public Service	38,546	39,806	852,609	647,373	656,818	
Academic Support	10,891,319	13,705,840	13,983,988	14,140,386	14,732,807	
Student Service	5,871,536	6,139,029	5,939,909	5,758,535	6,178,531	
Institution Support	17,119,013	16,808,849	16,494,657	16,902,983	16,896,045	
Plant Op and Maintenance	10,906,676	11,342,134	11,622,932	11,462,631	11,750,447	
Financial Aid	16,073,742	19,678,699	21,724,674	23,220,364	27,124,948	
Aux. Enterprises	N/E	N/E	N/E	N/E	N/E	
Mandatory Transfers	1,061,197	1,461,100	2,364,008	1,394,234	1,358,581	
Non-Mandatory Transfers	13,135,807	13,775,674	12,891,733	14,112,285	11,376,048	
MTU TOTAL	134,796,583	147,931,991	155,072,223	157,651,219	161,661,427	
Source: HEIDI						



Source: University Compendium

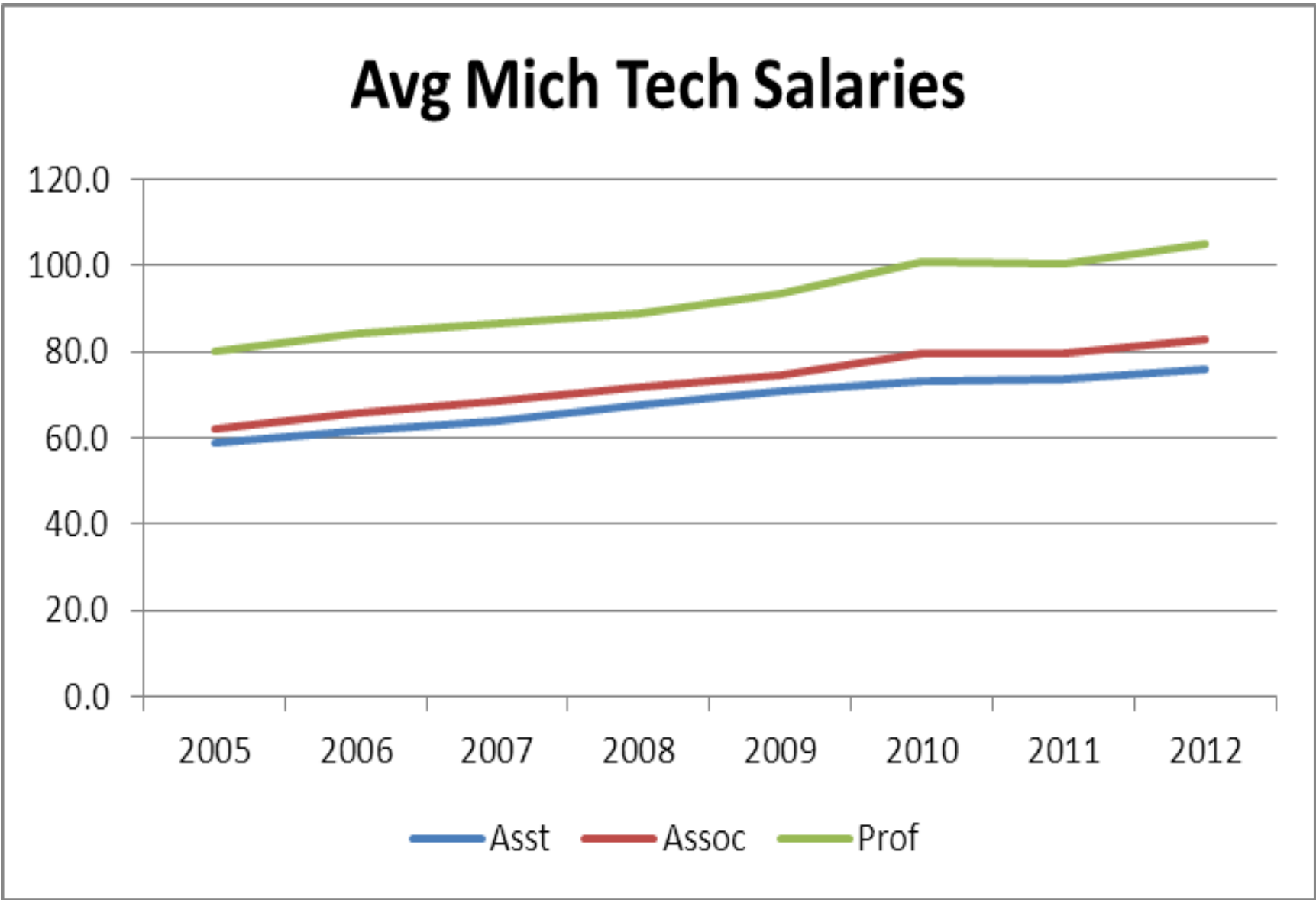
FY (Fall Census)

Faculty & Staff Salaries

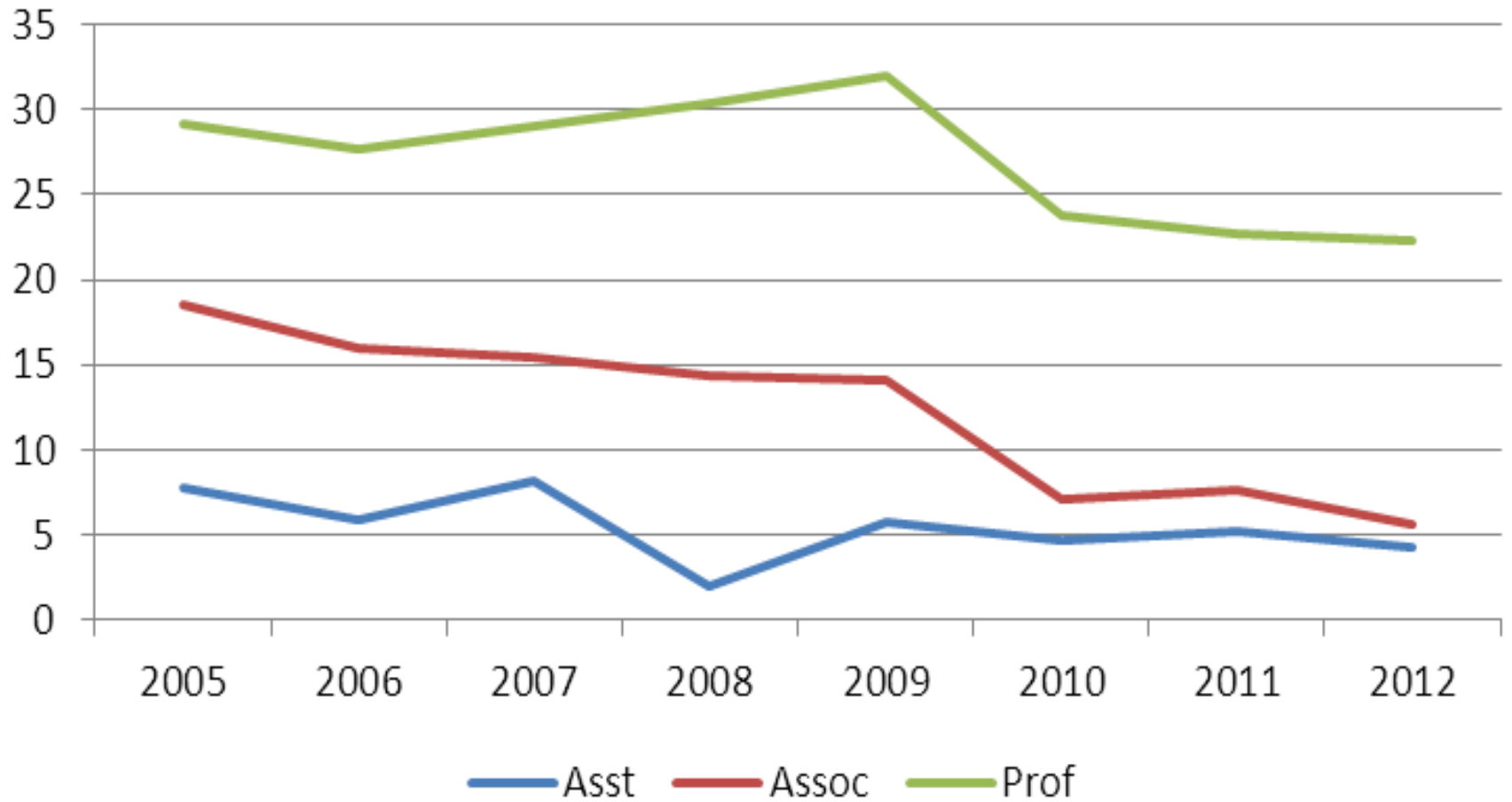


Faculty

Avg Mich Tech Salaries

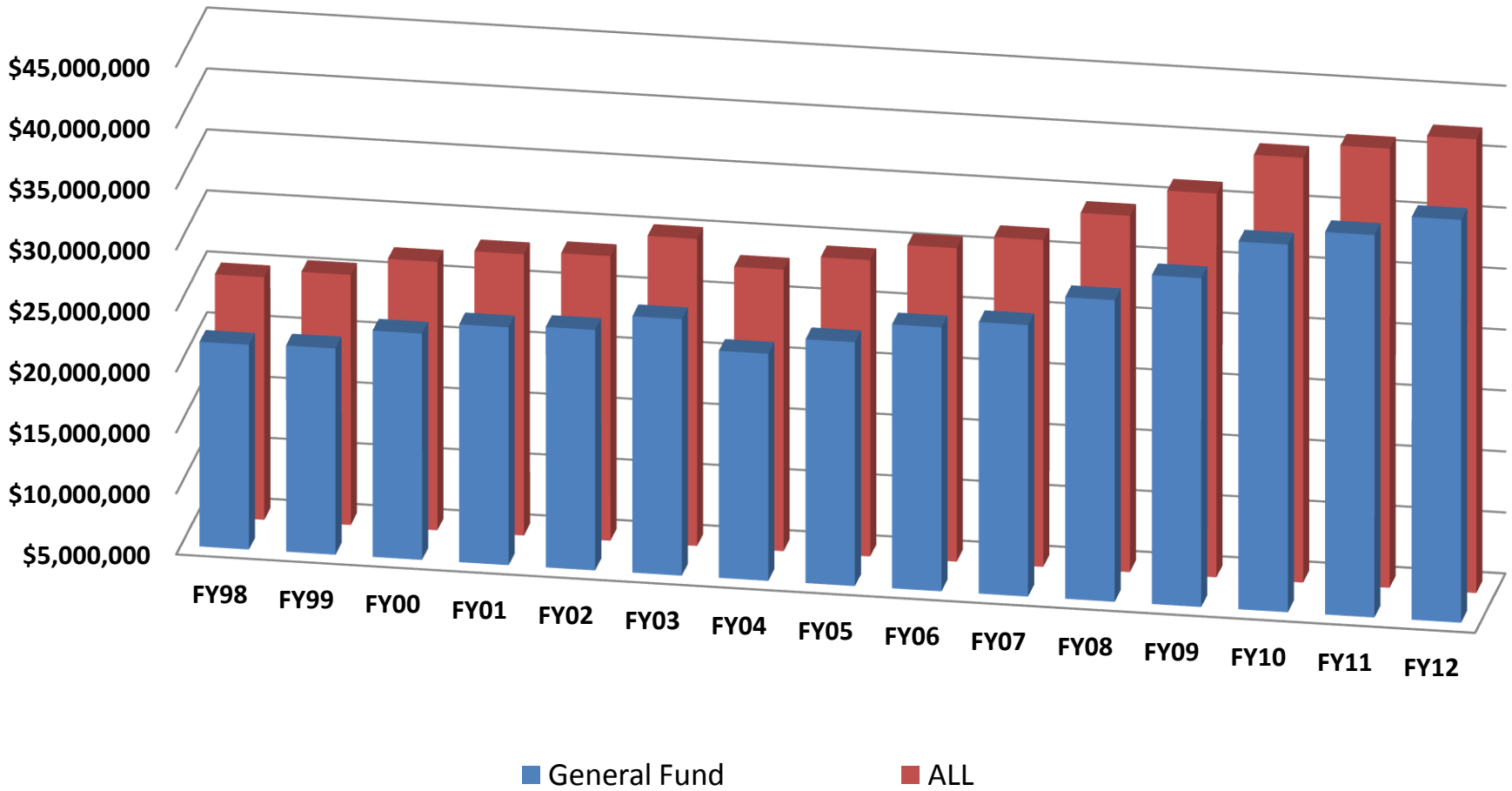


Avg Diff - MT vs Peers (%)



	FY 2007	FY 2012	% Increase	% Annual
Professor				
Total Compensation	120.9	143.1	18.36	3.43
Salary & Wages	86.6	105.2	21.48	3.97
Associate Professor				
Total Compensation	96.1	113.8	18.42	3.44
Salary & Wages	68.7	82.8	20.52	3.80
Assistant Professor				
Total Compensation	89.6	103.2	15.38	2.87
Salary & Wages	64.2	75.9	18.22	3.40

Faculty Salary and Wages FY98 through FY12



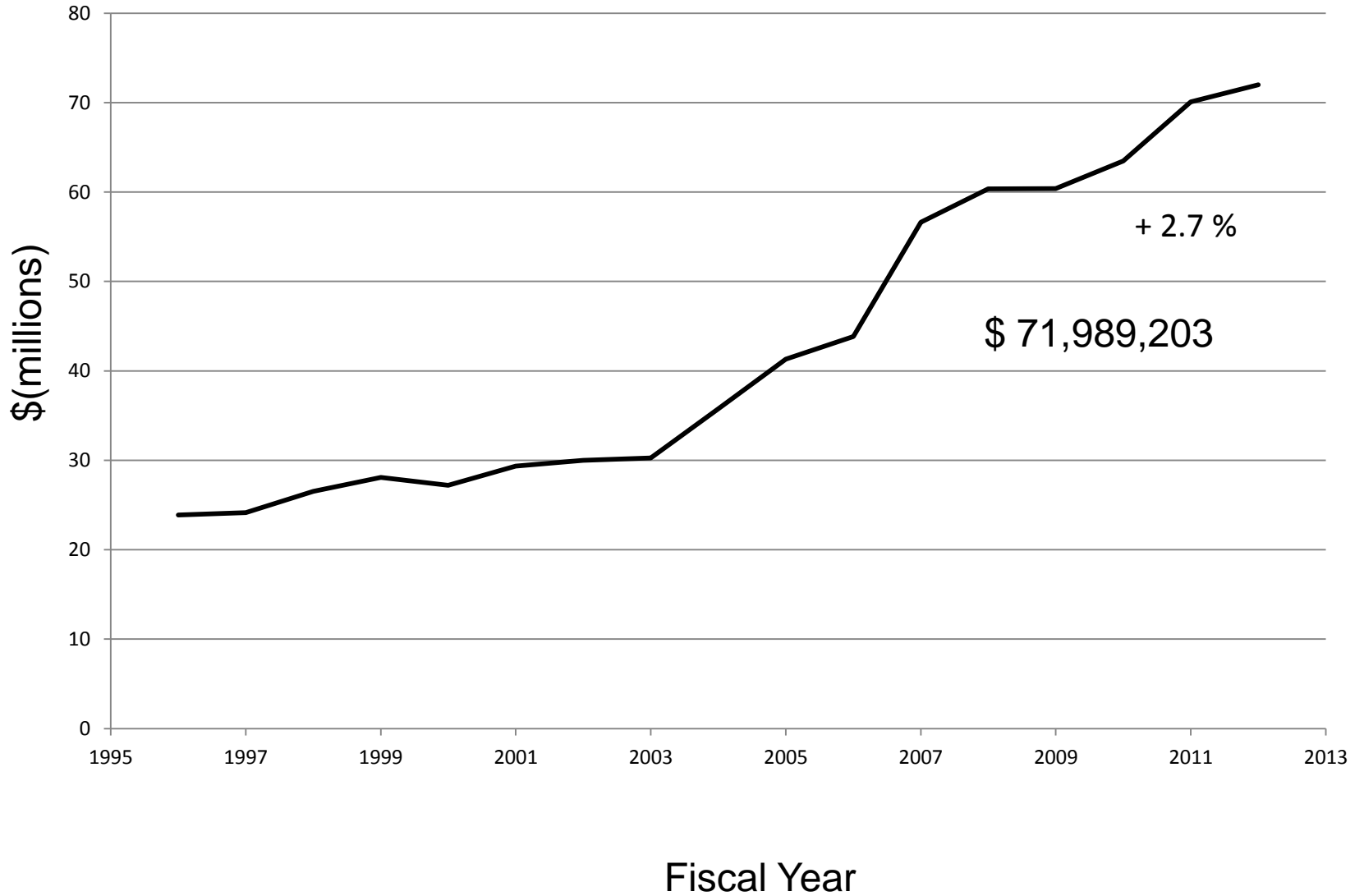
General Fund FY 2012	Planned (Thousands)	Actuals (Thousands)
Operating Revenue	\$118,930	\$117,139
Operating Expenses	\$(144,951)	\$(148,927)
Transfers	\$(14,740)	\$(12,734)
Non-Operating Revenues	\$40,761	\$42,919
Net	---	\$(1,603)

Current Fund FY 2012	Budget (Thousands)	Actuals (Thousands)
Operating Revenue	\$192,175	\$189,024
Operating Expenses	\$(244,494)	\$(247,400)
Transfers	\$(6,037)	\$(5,043)
Non-Operating Revenues	\$58,398	\$59,828
Net	\$42	\$(3,591)

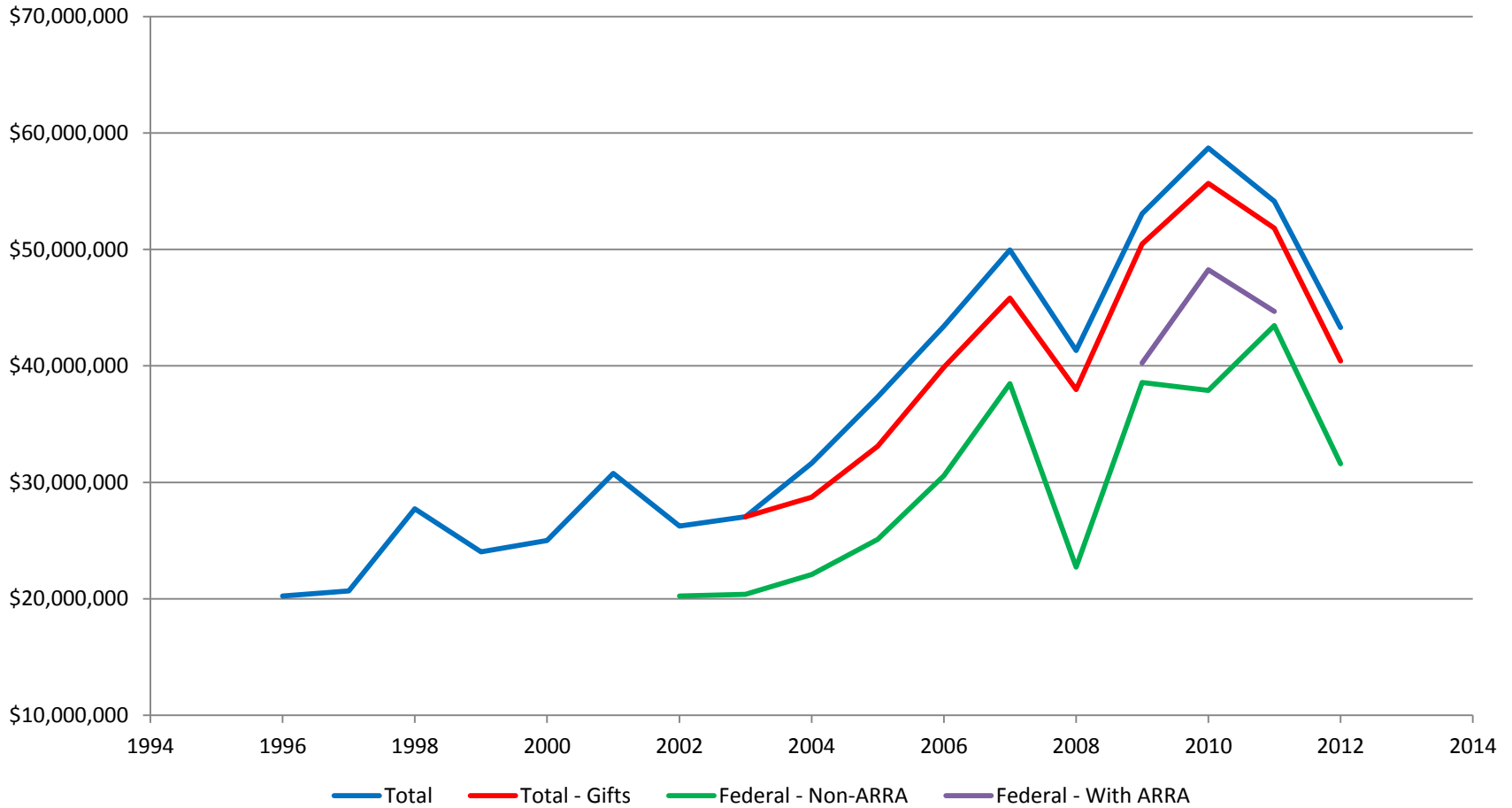
General Fund FY13 Budget

	Budget		Variance	
	Base Year	Budget Year		
	FY12	FY13		
Operating Revenues				
	\$ 118,929,621	122,901,384	3,971,763	3.34%
Operating Expenses				
Staff S&W	\$ (27,728,705)	(27,864,030)	(135,324)	0.49%
Faculty S&W	\$ (39,511,577)	(41,609,216)	(2,097,638)	5.31%
Grad Student S&W	\$ (3,369,235)	(3,504,004)	(134,769)	4.00%
Undergrad Student S&W	\$ (984,956)	(943,447)	41,509	-4.21%
Fringe Benefits	\$ (24,209,149)	(25,438,614)	(1,229,465)	5.08%
Supplies & Services	\$ (16,662,514)	(15,203,289)	1,459,225	-8.76%
Scholarships	\$ (27,264,097)	(31,453,097)	(4,189,000)	15.36%
Utilities	\$ (4,520,850)	(4,520,850)	0	0.00%
Carry forward/Contingency Reserve	\$ (3,200,000)	(3,200,000)	0	0.00%
	\$(147,451,083)	(153,736,546)	(6,285,463)	4.26%
Transfers				
	\$ (12,239,738)	(11,724,738)	515,000	-4.21%
Non-operating Revenues (Expenses)				
	\$ 40,761,200	42,559,900	1,798,700	4.41%
Net Income (Loss)	\$ -	0	0	

FY12 Research Expenditures



FY12 Sponsored Program Awards



Fiscal Year

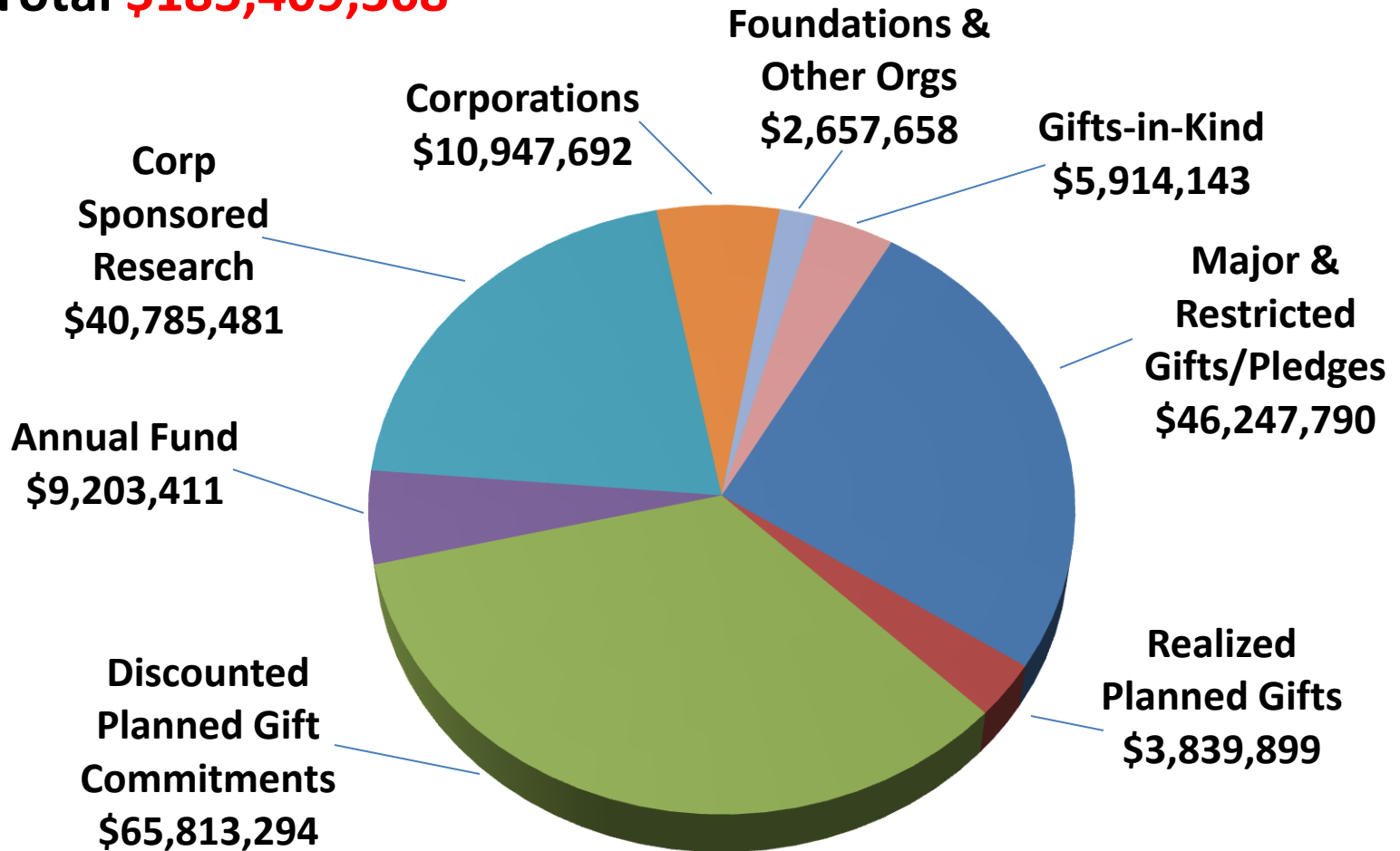
FY12 Sponsored Program Awards

- Unobligated Awards – We sometimes receive partial funding on projects, and this seems to be becoming more frequent on federal projects. There was a minimum of \$16,130,438 in unobligated awards as of September, 2012.

Campaign Totals by Source

June 2006 – September 30, 2012

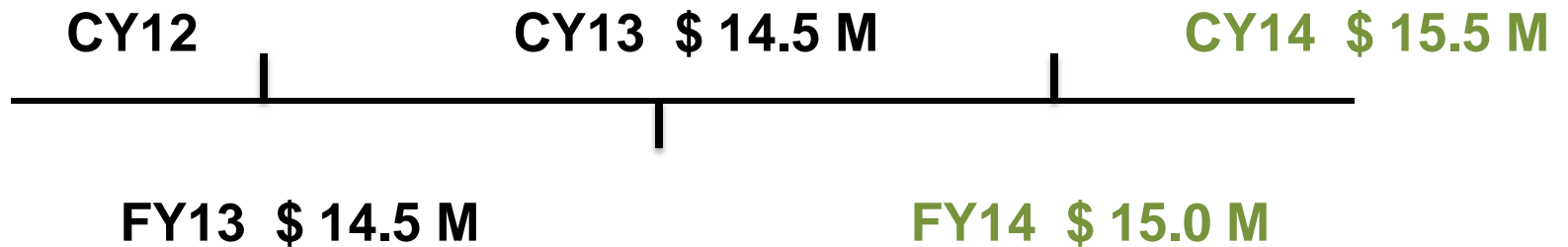
Total **\$185,409,368**



Michigan Technological University
Generations of Discovery
Campaign Breakdown
As of September 30, 2012

• Facilities	\$ 7.2M
• Scholarships/Fellowships	30.0M
• Chairs & Professorships	38.2M
• Depts. Program Support/Ops.	56.8M
• Unrestricted or undesignated	4.3M
• Private Research	<u>48.9M</u>
TOTAL	\$185.4M

Health Care Budget



Other Issues

➤ Plateau Tuition