

Graduate Student Issues

Dave Reed

November, 2011

Basic Tuition Rates

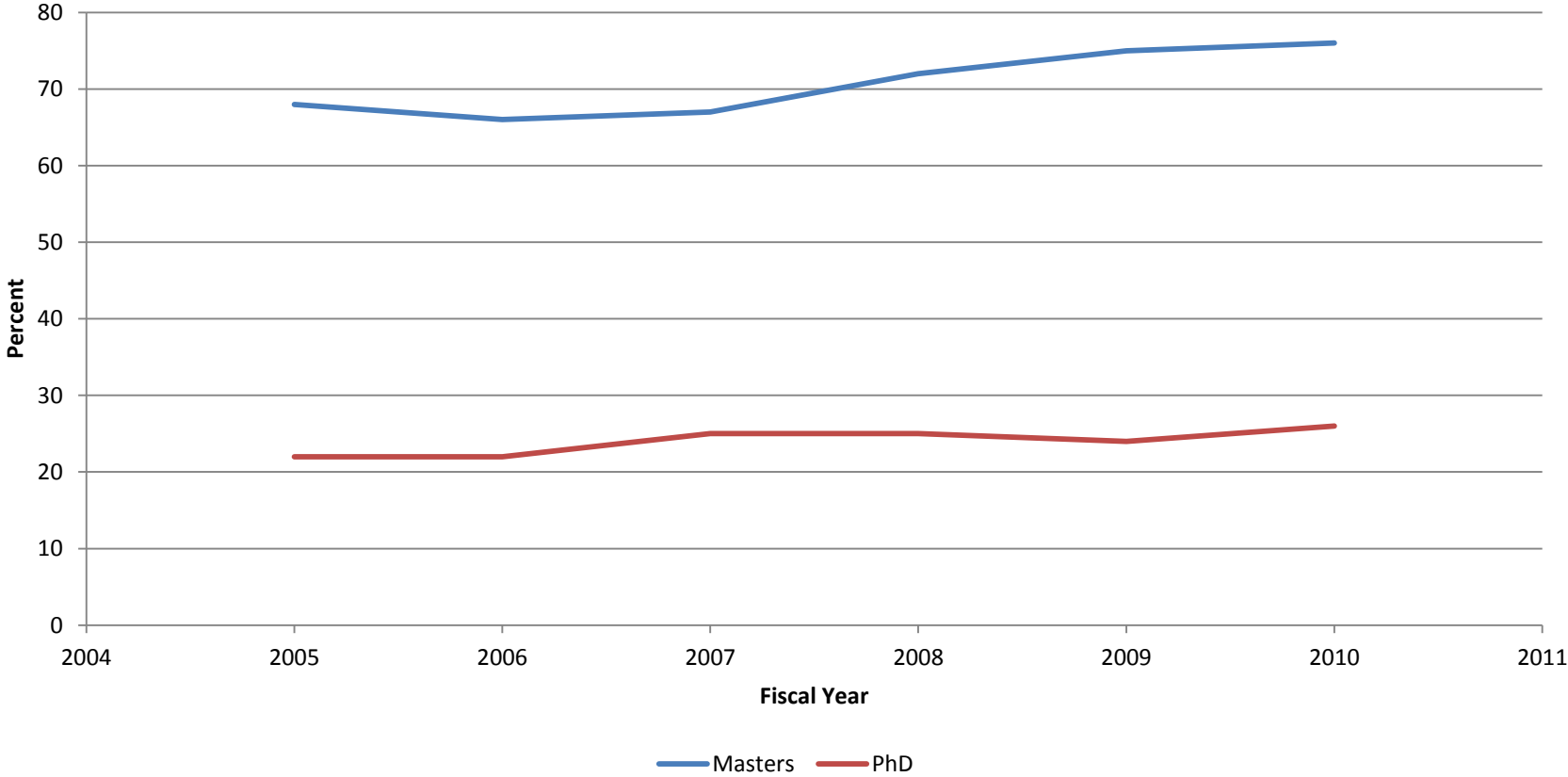
- Resident Undergrad: \$ 420.50/SCH
- Non-resident Undergrad: \$ 857.00/SCH
- Graduate: \$ 702.00/SCH

Basic Tuition Rates

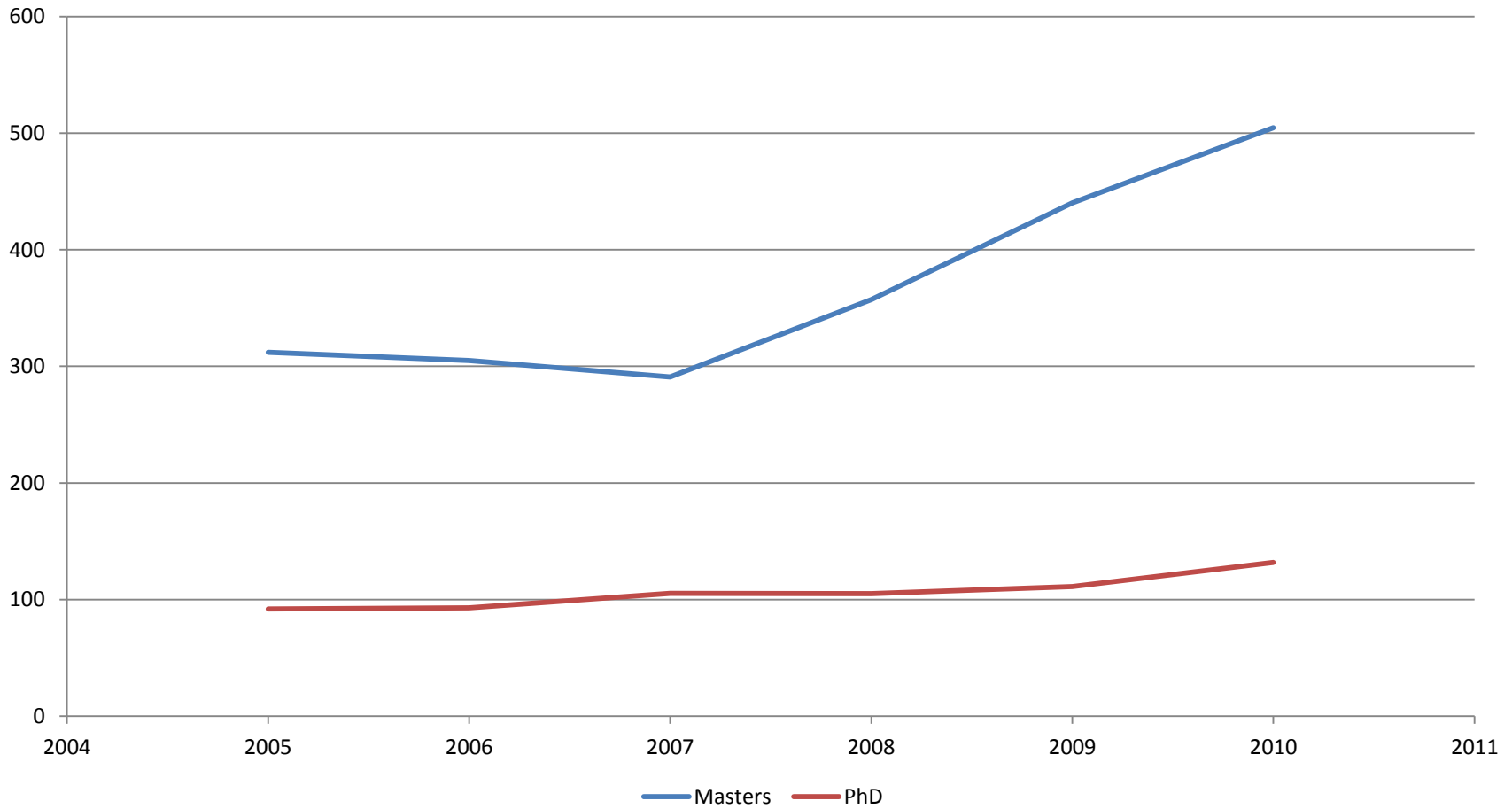
- It's important to note that the discount rate for incoming domestic non-resident students was 51% in Fall, 2011.
- Financial aid for unsupported graduate students is minimal, and access to Pell Grants is changing.

Unsupported Graduate Students

Percent Unsupported Graduate Students



Unsupported Graduate Students



Single Graduate Rate

- Resident and non-resident graduate tuition rates were collapsed into a single rate a number of years ago.
- At that time, we had very few graduate students paying the non-resident rate [supported students were assessed the in-state rate].
- One goal was to become more attractive to unsupported domestic non-resident graduate students.

Michigan Technological University
Unsupported Grad Students Enrollment by Residency
Fall 2003, Fall 2004 & Fall 2010

	Fall 2003	Fall 2004	Fall 2010
Michigan Resident	123	164	248
Non-Resident	64	64	148
International	114	100	309
TOTAL	301	328	705

Costs and Revenues of Undergraduate and Graduate Programs

- Review of Undergraduate and Graduate Program Costs and Revenues, Oct. 28, 2005
- <http://www.mtu.edu/mtuonly/reports/costs102805.pdf>
- Analyses based on FY03 and FY04.
- Graduate education was combined with research activities for the analyses.

Undergrad/Graduate Costs and Revenues

- Findings:
 - Without considering the state appropriation, costs exceeded revenues for both undergraduate and graduate education under every scenario.
 - Generally, under a variety of appropriation allocation alternatives:
 - Either graduate education and research were cash positive and undergraduate cash negative, or
 - Graduate education was less cash negative than undergraduate education.

2004 Results

- State Approps. Allocated on Faculty Sal. And Faculty Time Allocated Using Faculty Effort and SCH

Undergraduate	(\$9,272)
---------------	-----------

Graduate	\$6,811
----------	---------

- State Approps. Allocated on Total Exp. And Faculty Time Allocated Using Faculty Effort and SCH

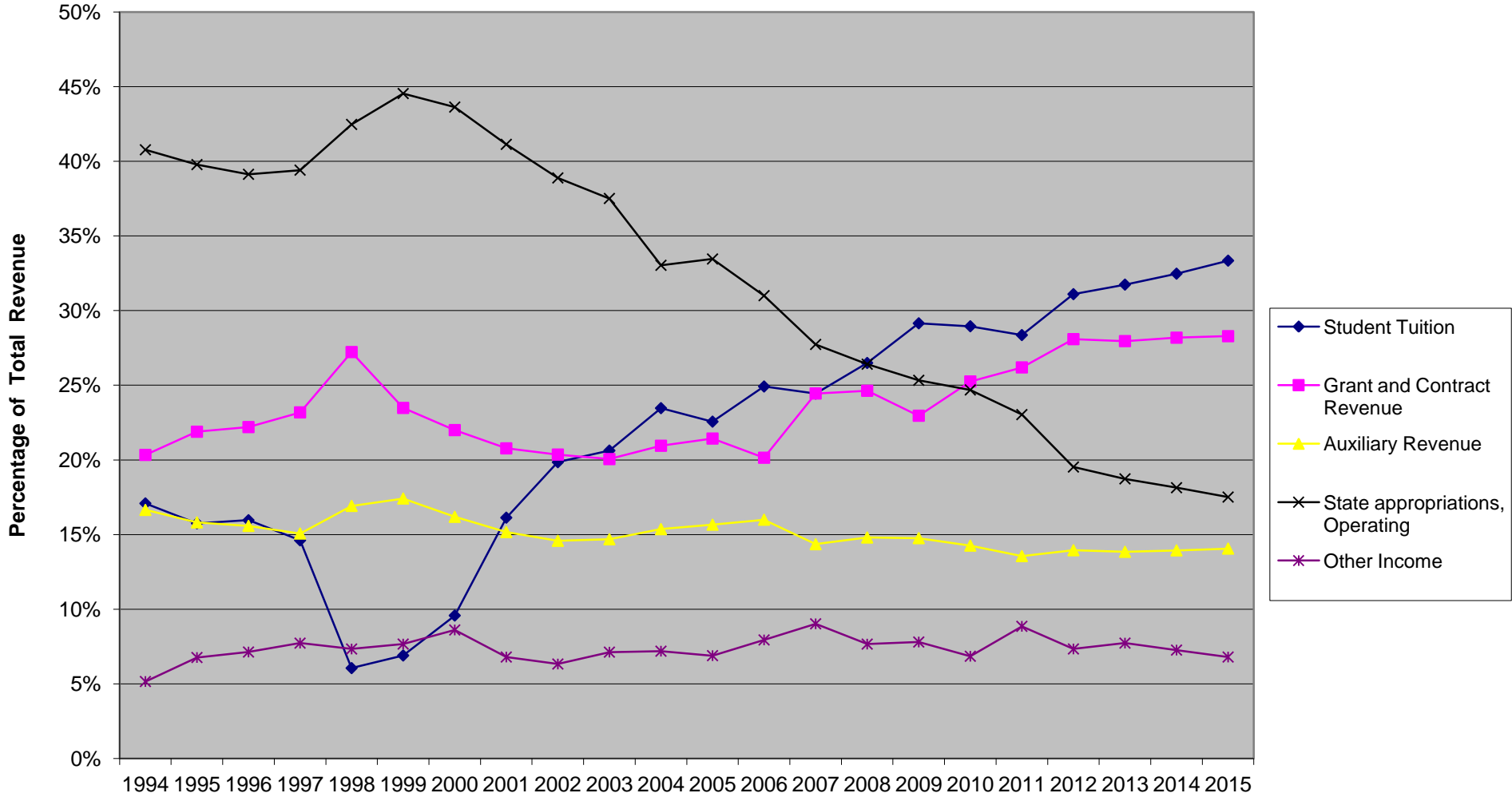
Undergraduate	(\$ 985)
---------------	----------

Graduate	(\$1,477)
----------	-----------

Changing Environment

- Since those analyses were done:
 - State appropriation has declined to approximately 16% of the total university revenue;
 - Undergraduate enrollment has remained relatively flat (5765 vs. 5720);
 - Graduate enrollment has increased by 57% (800 vs. 1256);
 - Sponsored awards have increased 94% (\$28.7 MM vs. \$55.7 MM)
 - -F&A recovery has doubled (\$5.1 MM vs. \$10.1 MM)

**CPI Adjusted Revenue Streams 1994-2015
As a Percentage of Total Revenue**



2011 Results

- State Approps. Allocated on Faculty Sal. And Faculty Time Allocated Using Faculty Effort and SCH

Undergraduate	(\$1,213)
---------------	-----------

Graduate	\$1,473
----------	---------

- State Approps. Allocated on Total Exp. And Faculty Time Allocated Using Faculty Effort and SCH

Undergraduate	\$7,523
---------------	---------

Graduate	(\$7,263)
----------	-----------

Summary of 2004 vs. 2011

State Approps. Allocated	Net Profit/Loss Undergrad	Net Profit/Loss Graduate
Faculty Salary	\$8,059	(\$5,338)
Total Expenditures	\$8,508	(\$5,786)

