

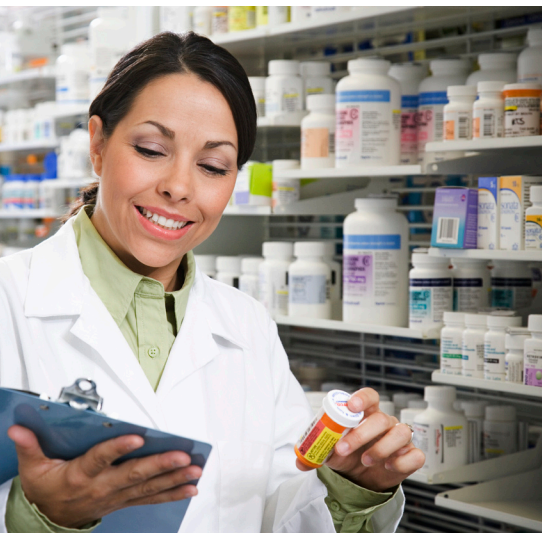
Important information for members prescribed specialty medications

Aetna Specialty CareRxSM Program

Your benefit covers specialty medications

Right now, you may get specialty medications such as self-injectables from a retail or specialty pharmacy. With your new Aetna Specialty CareRx benefit, you can get your first fill at a retail pharmacy. In order to receive coverage, your second fill and all other refills will need to come from a participating specialty pharmacy. You will pay full cost for these medications if you do not use an Aetna participating specialty pharmacy after the first fill at a retail pharmacy.

Please refer to the Aetna Specialty CareRx medication list to see which medications apply.



Aetna is the brand name used for products and services provided by one or more of the Aetna group of subsidiary companies. The Aetna companies that offer, underwrite or administer benefits coverage include: Aetna Health Inc., Aetna Health of California Inc., Aetna Health of the Carolinas Inc., Aetna Health of Illinois Inc., Aetna Health Insurance Company of New York, Aetna Health Insurance Company and/or Aetna Life Insurance Company (Aetna).

Aetna Specialty Pharmacy refers to Aetna Specialty Pharmacy, LLC, a subsidiary of Aetna Inc, which is a licensed pharmacy that operates through specialty pharmacy prescription fulfillment.

05.03.369.1 (10/08)

Here's how the program works:

Ordering your first prescription

- You can get the **first** fill of your medications at a participating retail pharmacy;
- Or, you can place your order through Aetna Specialty Pharmacy. To fill your prescription through Aetna Specialty Pharmacy:
 - > Ask your doctor to fax your prescription to **1-866-FAX-ASRX (1-866-329-2779)**; or
 - > To transfer a prescription to Aetna Specialty Pharmacy, call toll free at **1-866-353-1892**.

Ordering refills

Ask your doctor to place your refill order with Aetna Specialty Pharmacy. Call toll free at **1-866-782-ASRX (1-866-782-2779)** or TDD **1-877-833-ASRX (1-877-833-2779)**.

You get a personal care plan and many helpful services, including:

- Nurse and pharmacist support, by phone, available 24 hours a day, 7 days a week.
- Coordination with your doctor to check that you receive the right medication and supplies.
- Free, confidential delivery within 24 to 48 hours of confirming your order.
- Free educational information and self-injection training, as needed.

Aetna Specialty Pharmacy[®] helps you manage your medication and condition.

Aetna Specialty Pharmacy typically offers a medication supply of 30 days

This lets them check on you more often. It prevents waste and saves you money if your medication or dose changes between refills. Your medication and copay amounts depend on your benefits plan.

To learn more about the medications covered by your prescription drug plan, visit www.aetna.com. Or call the toll-free number on your Aetna Member ID card.

We want you to know[®]

www.aetna.com

©2008 Aetna Inc.